

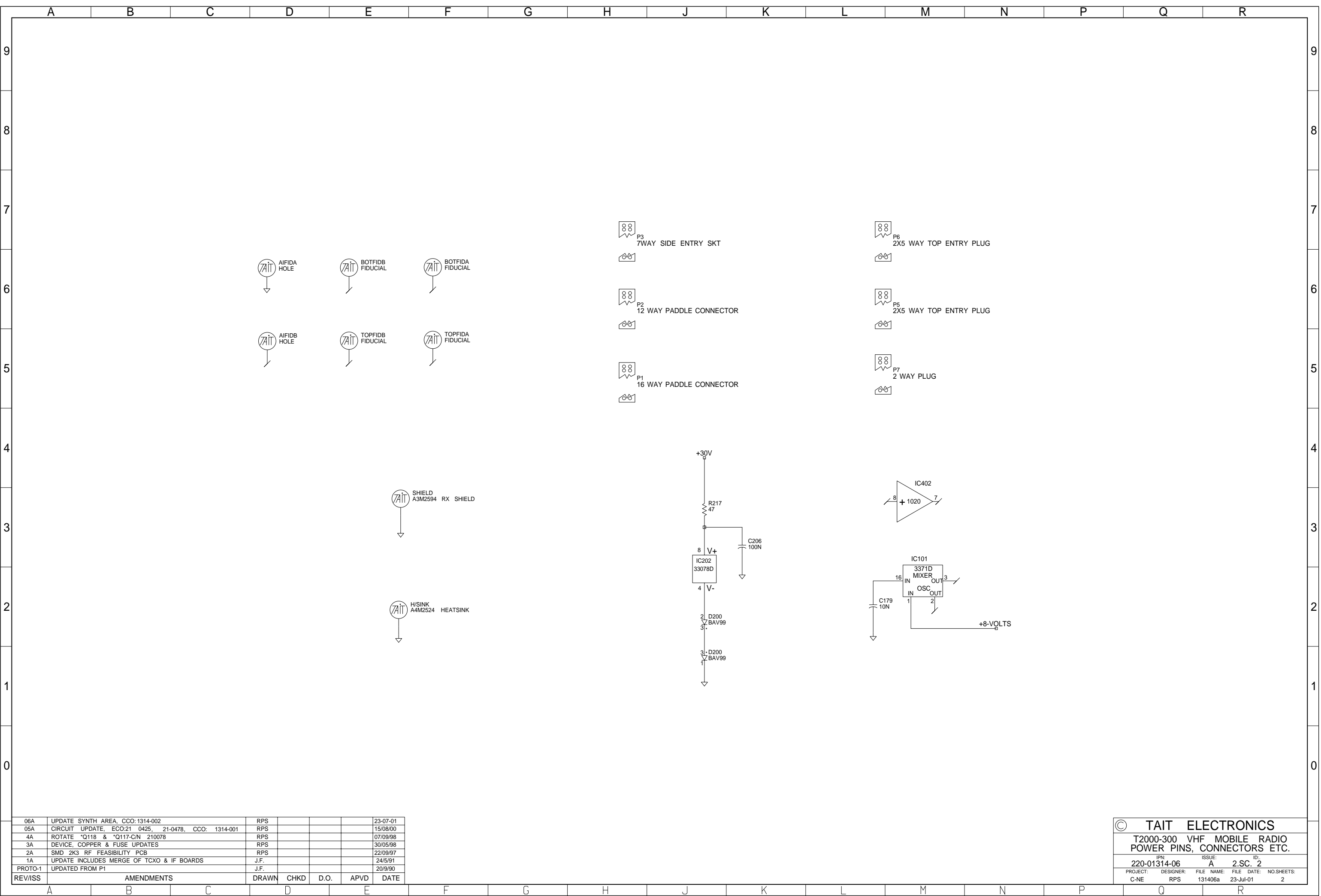
REV/ISS	DESCRIPTION	DRAWN	CHKD	D.O.	APVD	DATE	REVISION	AMENDMENTS
06A	UPDATE SYNTH AREA, CCO-1314-002	RPS				23/07/01	1A	CHANGED VALUES OF R219,C230,R149,C156 TO R162
05A	CIRCUIT UPDATE, ECO-21 0425, 21-0478, CCO: 1314-001	RPS				15/08/00	P6	ADDED 1ND CAPS FOR EMC PROBLEM(BY P3)
4A	ROTATE Q118 & Q117 CN 210078	RPS				07/09/98	P5	ADDED A DUALBAND CIRCUIT FROM ISSUE P2
3A	DEVICE COMPILER & FUSE UPDATES	RPS				30/05/98	P2	UPDATED FOR BDM COMPARISON
2A	SMD 2K3 RF FEASIBILITY PCB	RPS				22/09/97	P1	PROGRAMMABLE T2K3, CLONED OFF 2K3VFL7B

*TYPE	*R129	*R130	*R134	*R136	*R137	*R139	*R151	*R152	*R154	*R162	*R163	*R164	*R165	*R166	*R167	*R168	*R170	*R194	*C120	*C189	*C190	*Q116	*Q117	*Q118	*Q119	*Q120
DUALBANDWIDTH STANDARD	0S	4K7S 0S	4K7S	220KS	10KS	10KS	1K5S 3K3S	220KS 390KS	22KS	18KS	3K3S	470KS	560KS	2K2S	10KS	4K7S	2K2S	390KS	170F16	150PS 470PS	150PS 470PS	BFR31	BC848	BC848	BC848	BC848

TAIT ELECTRONICS
T2000-300 VHF MOBILE RADIO PROGRAMMABLE

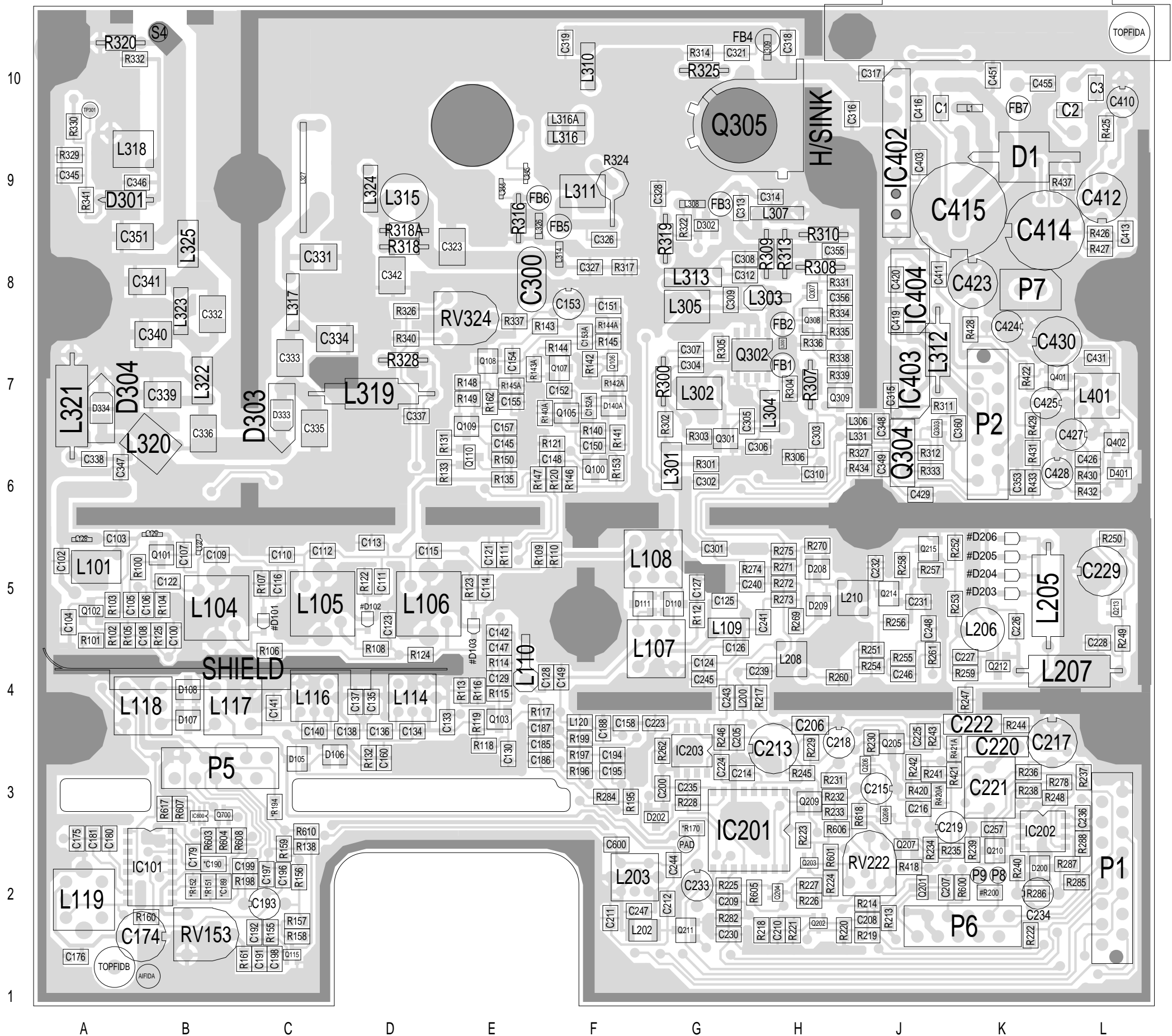
PROJECT: 220-0134-06
 DESIGNER: A
 ISSUE: 2.5C-1
 C-NE RPS 131406A 23-Jul-01

NO. SHEETS: 2

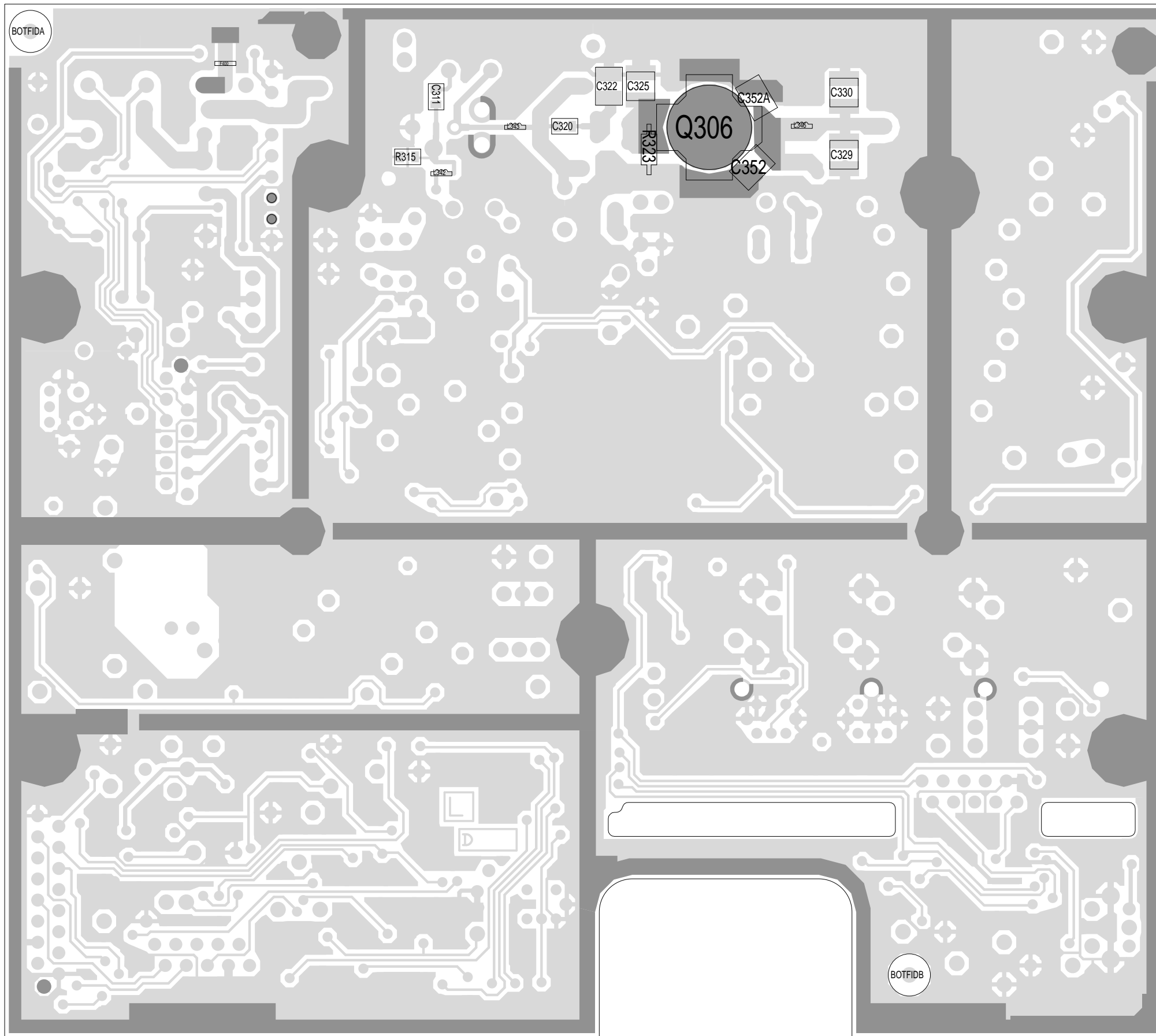


06A	UPDATE SYNTH AREA, CCO: 1314-002	RPS				23-07-01
05A	CIRCUIT UPDATE, ECO:21 0425, 21-0478, CCO: 1314-001	RPS				15/08/00
4A	ROTATE *Q118 & *Q117-C/N 210078	RPS				07/09/98
3A	DEVICE, COPPER & FUSE UPDATES	RPS				30/05/98
2A	SMD 2K3 RF FEASIBILITY PCB	RPS				22/09/97
1A	UPDATE INCLUDES MERGE OF TCXO & IF BOARDS	J.F.				24/5/91
PROTO-1	UPDATED FROM P1	J.F.				20/9/90
REV/ISS	AMENDMENTS	DRAWN	CHKD	D.O.	APVD	DATE

© TAIT ELECTRONICS
T2000-300 VHF MOBILE RADIO
POWER PINS, CONNECTORS ETC.
IPN: 220-01314-06 ISSUE: A ID: 2.SC. 2
PROJECT: C-NE DESIGNER: RPS FILE NAME: 131406a FILE DATE: 23-Jul-01 NO.SHEETS: 2



TAIT ELECTRONICS IPN: 220-01314-06 ISS: A ID: 1.TA DATE: 23 Jul 2001
 T2K3-DB PCB LAYOUT - TOP SIDE



10
9
8
7
6
5
4
3
2
1

L K J H G F E D C B A

TAIT ELECTRONICS	IPN:	ISS:	ID:	DATE:
	220-01314-06	A	2.BA	23 Jul 2001
T2K3-DB PCB LAYOUT - BOTTOM SIDE				

Scale: 1.9:1 ; Rotation: 0 degrees